

## RESTAURANTS

	MAXIMUM RECEPTION	MAXIMUM SEATED BANQUET	MAXIMUM THEATER SEATED	MILES FROM CONVENTION CENTER	
<b>URBAN BAR AND GRILL</b> 827 Fifth Ave., San Diego, CA 92101 619-235-8700, www.urbanbarandgrill.com	230	175		0.7	A chill urban environment located in the heart of the Gaslamp Quarter. Serving a fresh look at contemporary cuisine. <i>Other Spaces: South Room, 50.</i>
<b>VELA</b> Hilton San Diego Bayfront, One Park Blvd., San Diego, CA 92101 619-321-4284, www.hiltonsandiegobayfront.com	500	100		0.1	Located on the waterfront and in one of the largest agricultural regions with over 6,000 small farmers. Farm to fork concept is the inspiration featuring the freshest local ingredients served with passion. <i>Other Spaces: Private dining room, 30. Patio, 120. Buffet room, 40.</i>
<b>VIGILUCCI'S</b> 1330 Orange Ave. Suite 200, Coronado, CA 92118 760-930-0334, www.vigiluccis.com	200			5.6	Specializing in prime meats, fresh seafood and authentic Italian cuisine. We take great pride in our food and service at all of our eight locations. <i>Other Spaces: Ocean Room, 120/90. Private dining room, 65/50.</i>
<b>WET STONE WINE BAR &amp; CAFÉ</b> 1927 Fourth Ave., San Diego, CA 92101 619-255-2856, www.wetstonewinebar.com	50			2.5	Global small plates and esoteric wine/beer menus make Wet Stone Wine Bar a San Diego favorite. <i>Other Spaces: Back lounge casual bench seating, up to 20.</i>
<b>WHISKEY GIRL</b> 600 Fifth Ave., San Diego, CA 92101 858-353-4726, www.thewhiskeygirl.com	415	200		0.4	At the corner of Fifth and Market, the most excitement in the Gaslamp! Host your private event or party in our VIP room or in our Below Market Bar. <i>Other Spaces: Private room, 119. Semi-private room, 40.</i>
<b>YARD HOUSE</b> 1023 Fourth Ave., San Diego, CA 92101 619-233-9273, www.yardhouse.com	579			0.7	Great food, classic rock. World's largest selection of draft beer. <i>Other Spaces: Underground, 175/175. Semi-private, 65/50.</i>
<b>ZANZIBAR CAFÉ - DOWNTOWN</b> 707 G St., San Diego, CA 92101 619-230-0125, www.zanzibarcafe.com	100	75		0.6	Open for breakfast, lunch and dinner. We serve high-quality eclectic California Cuisine in a casual neighborhood bistro-style ambiance. Beer and wine available.

## THEATERS AND PERFORMANCE VENUES

<b>4TH AND B</b> 345 B St., San Diego, CA 92101 619-231-4343, www.4thandb.com	1,000	350	700	0.9	Experience San Diego's celebrated home for live music and after-hours nightlife.
<b>ANTHOLOGY</b> 1337 India St., San Diego, CA 92101 619-795-6929, www.anthologysd.com	500			1	Jazz, blues, soul, classic rock, R&B and latin are in harmony with cuisine. Buyout includes the Anthology House Band. <i>Other Spaces: Private Room, 24/20. First Floor, 125.</i>
<b>BALBOA THEATRE</b> 868 Fourth Ave., San Diego, CA 92101 619-615-4000, Fax: 619-615-4001 don.telford@sandiegtheatres.org www.sandiegtheatres.org			1,320	0.7	Reopened after extensive renovation in December, 2007. Classic, ornate theatre; 1,320 capacity. <i>See our ad on page 161</i>
<b>COPLEY SYMPHONY HALL</b> 750 B St., San Diego, CA 92101 619-615-3916, Fax: 619-231-3848 dlegg@sandiegosymphony.org www.sandiegosymphony.org			2,252	1.1	Opened in 1929 and built in a somewhat French Rococco theme, it has seen a parade of Hollywood personalities and was Walt Disney's choice for all his movie openings. <i>Other Spaces: Revelle Room, 70. Lower Lobby, 250 seated. Upper, 120 seated.</i> <i>See our ad on page 163</i>
<b>HORTON GRAND THEATRE</b> 444 Fourth Ave., San Diego, CA 92101 619-437-6050 x26, www.hortongrandtheatre.com	50	250	250	0.4	A comfortable 250-seat gem of a theater with a year-round production schedule. Located in the heart of the Gaslamp Quarter we are perfect for group events. <i>Other Spaces: Lamb's Players Theatre. Theatre Lobby, 50.</i>
<b>HOUSE OF BLUES®</b> 1055 Fifth Ave., San Diego, CA 92101 619-525-1931, www.hob.com/specialevents	1,500	220	250	0.7	If you're looking for a truly unique venue in the Gaslamp, the House of Blues® on Fifth is sure to please. <i>Other Spaces: Delta, 175/80. Restaurant, 200/100.</i>
<b>LA JOLLA PLAYHOUSE</b> 2910 La Jolla Village Dr., La Jolla, CA 92037 858-550-1070, www.lajollaplayhouse.com	250		492	13	The Playhouse's brilliant and innovative productions have merited over 300 major honors including the 1993 Tony Award as America's Outstanding Regional Theatre. <i>Other Spaces: Weiss Theater Deck, 150. Forum Theater Courtyard, 250. Potiker Theater VIP Lounge, 75. Admin. Staff Deck, 100.</i>



868 4th Avenue  
 San Diego, CA 92101  
 Phone: 619-615-4000  
[www.sandiegotheatres.org](http://www.sandiegotheatres.org)  
[don.telford@sandiegotheatres.org](mailto:don.telford@sandiegotheatres.org)

## BALBOA THEATRE

*A historic gem in the heart of the Gaslamp Quarter.*

The historic Balboa Theatre originally opened in 1924 as a premiere vaudeville house before being converted to films in the 1930's. In the 1980's, it was acquired by the City's Redevelopment Agency and was closed for approximately 20 years.

In January 2008, the historic Balboa Theatre reopened as a performing arts venue after a \$26 million restoration and renovation by the Redevelopment Agency. This effort included extensive seismic retro-fit, complete replacement of all infrastructure systems including electrical, plumbing, HVAC and life safety, ADA accommodations, state-of-the-industry theatrical lighting, audio, rigging and production requirements and audience accommodations including new seating. The project restored the historic finishes and appearance of the Theatre while incorporating current audience and production expectations to ensure its use for generations to come.

With 1,339 seats, the historic Balboa Theatre provides exceptional sightlines for audiences. It's ornate finishes provide a uniquely dramatic and exciting venue for experiencing all types of entertainment for corporate, convention and private gatherings.

With its location in the heart of the Gaslamp Quarter, the Balboa Theatre is conveniently located near downtown hotels, dining and nightlife opportunities.

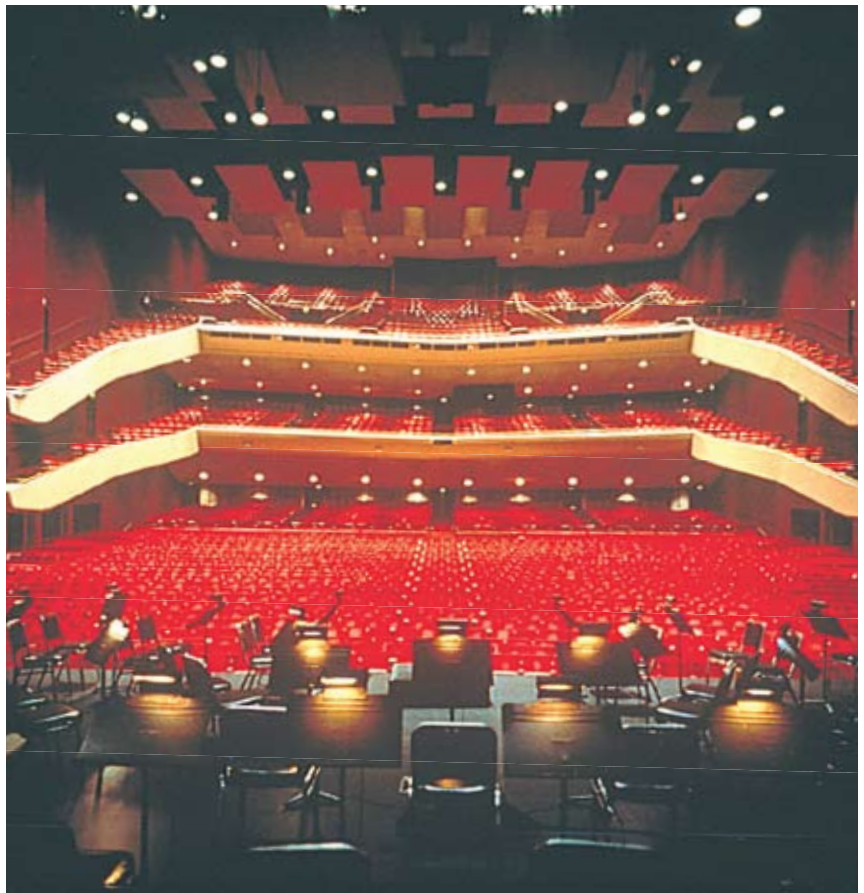
- 1,339-seat live-performance facility
- Historic theatre reopened in 2008 after extensive \$26 million restoration and renovation.
- Proscenium opening: 41' wide by 24'
- Stage measuring: 77' wide by 27' deep
- Theatrical lighting and dimmer system controlled by ETC Ion system with extensive professional lighting instrument inventory.
- Orchestra pit that can extend the stage
- Located in the heart of downtown's Gaslamp Quarter



# San Diego Civic Theatre

110 Third Avenue  
 San Diego, CA 92101  
 Phone: 619-615-4000  
 www.sdcivic.org  
 don.telford@sandiegotheatres.org

- Seating of 2,967
- Proscenium opening of 56' w x 29'6" h
- Stage Depth of 55' x 134' wide
- Orchestra Pit accommodates 45 to 60 musicians
- Theatrical lighting and dimmer system controlled by ETC Eos system
- Sound system includes four-way JBL speaker cluster and 4,800 watts of power
- Temporary electrical power available for contracted lighting and sound systems
- Dressing rooms accommodate 90 performers in 15 rooms
- Loading dock is at stage level and accommodates two semi-trucks



## SAN DIEGO CIVIC THEATRE

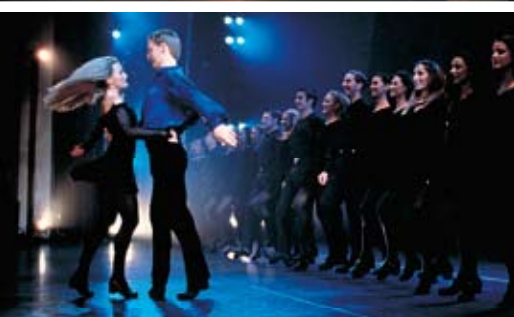
*The region's premier performing arts venue.*

The 2,967-seat San Diego Civic Theatre is the region's largest and most flexible performing arts venue for world-class entertainment.

Conveniently located in the heart of downtown San Diego, the Civic Theatre is close to first-class hotels and fine dining and is within walking distance of the Gaslamp Quarter and Horton Plaza. It is the performing home of the San Diego Opera, Broadway/San Diego and regularly hosts performances of the California Ballet and presentations by La Jolla Music Society. The Civic Theatre has hosted such large-scale productions as "Wicked," "Disney's The Lion King" and "The Phantom of the Opera." The Civic Theatre is also an ideal venue to host corporate, convention and other high-profile invitational entertainment events.

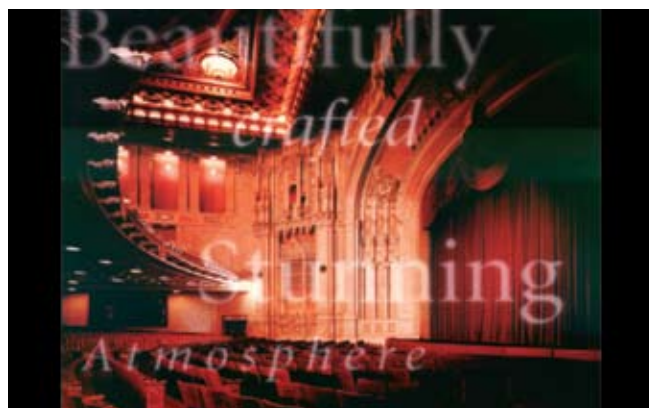
The Civic Theatre features a professional sound and lighting system, independent rehearsal hall and dressing rooms that are located backstage.

Adjacent to the Civic Theatre is an outdoor plaza that offers 20,000 square feet of flexible space ideal for special receptions or private parties. The plaza is perfect for special prefunction social gatherings and other special events associated with the Theatre's event activities. Convenient bus drop-off available.



## THEATERS AND PERFORMANCE VENUES

	MAXIMUM RECEPTION SEATED BANQUET	MAXIMUM THEATER SEATED	MILES FROM CONVENTION CENTER		
<b>READING CINEMAS</b> 701 Fifth Ave., San Diego, CA 92101 323-213-4987 elizabeth.mccormick@readingrdi.com www.readingcinemasus.com	500	476	0.7	Striking venue suited to host receptions, presentations and private screenings. State-of-the-art, stadium-designed auditoriums seat 130 to 476. Two-story lobby offers unique, elegant reception space. <i>See our ad on this page</i>	
<b>SAN DIEGO CIVIC THEATRE</b> 110 Third Ave., San Diego, CA 92103 619-615-4000, Fax: 619-615-4001 don.telford@sandiegotheatres.org, www.sdcivic.org	150	110	2,967	1.6	Elegant and plush, the 2,967-seat San Diego Civic Theatre is the largest, most prestigious and best equipped performing arts theatre in San Diego. <i>See our ad on page 162</i>
<b>SAN DIEGO REPERTORY THEATRE</b> 79 Horton Plaza, San Diego, CA 92101 619-231-3586 x618, www.sdrep.org	550		520	0.4	As the cultural town hall of San Diego, The REP is a multicultural and multidisciplinary performing and visual arts center that empowers the multiple voices of the community.
<b>SPRECKELS THEATRE</b> 121 Broadway, Suite 600, San Diego, CA 92101 619-235-9500, www.spreckels.net			1,463	0.5	The historic Spreckels Theatre opened in 1912. Acoustically perfect, the auditorium retains it's old world craftsmanship and warmth while providing all of the space and technical requirements to mount a Broadway show.
<b>STARLIGHT THEATRE</b> 2005 Pan American Plaza, San Diego, CA 92102 619-232-7827, www.starlighttheatre.org			3,575	19	Since 1946, Starlight Theatre in Balboa Park has dazzled generations of theatregoers, presenting live musical theatre and orchestra under the stars during the summer season.



### COPLEY SYMPHONY HALL

Voted San Diego City's Best Place for live music by AOL Cityguide  
See our virtual tour at [www.sandiegosymphony.com](http://www.sandiegosymphony.com)

- Copley Symphony Hall is a fully functional, magnificent, historic 1920's theatre
- Seating capacity, main hall: 2,250
- VIP reception room available
- Open, expansive period lobbies can be used for parties, weddings, cocktail receptions or lectures
- Central, convenient location on the edge of San Diego's famous Gaslamp Quarter
- Freshly renovated and upgraded backstage and technical facilities.
- Full service food and beverage (partnered with Sheraton Suites San Diego)

For more information visit  
[www.sandiegosymphony.com](http://www.sandiegosymphony.com) or contact Dennis Legg  
at 619.615.3916 / [dlegg@sandiegosymphony.org](mailto:dlegg@sandiegosymphony.org)

### READING CINEMAS GASLAMP 15

**PERFECT FOR**  
Receptions  
Presentations  
Private screenings

**FEATURING**  
Stadium seating in 15 theatres  
Two story lobby  
Digital projection



**GASLAMP 15**  
701 5th Ave.  
San Diego, CA 92101  
[ReadingCinemasUs.com](http://ReadingCinemasUs.com)

**INQUIRIES**  
323-213-4987  
[Elizabeth.McCormick@readingrdi.com](mailto:Elizabeth.McCormick@readingrdi.com)

## WATERFRONT AND PARKS

	MAXIMUM RECEPTION	MAXIMUM SEATED BANQUET	MAXIMUM THEATER SEATED	MILES FROM CONVENTION CENTER	
<b>BALBOA PARK</b> 1549 El Prado, San Diego, CA 92101 619-531-0151, www.restaurantevents.com	5,000+	5,000+		2.7	The nation's largest urban cultural park. Home to 15 major museums, renowned performing arts venues, beautiful gardens and the San Diego Zoo.
<b>EMBARCADERO PARKS NORTH AND SOUTH</b> Foot of Marina Parkway, San Diego, CA 92101 619-686-6200, www.portofsandiego.org	5,000			0.25	Located behind the San Diego Convention Center, San Diego Marriott and Manchester Grand Hyatt, both parks are available for large group special events. <i>Other Spaces: North, 3,000. South, 5,000.</i>
<b>HARBOR ISLAND YACHT CLUB</b> 1880 Harbor Island Dr., San Diego, CA 92101 619-291-7245, www.harborc.com	240			3.9	Corporate, group events and individual sailboat rentals. Skipper or bareboat. More than 50 sailboats, 22-foot to 42-foot boats. Team building events; 12 per boat.
<b>HILTON SAN DIEGO BAYFRONT</b> One Park Blvd., San Diego, CA 92101 619-564-3333, www.sandiegobayfront.hilton.com	6,112	5,010	6,772	0.1	Waterfront park on San Diego bay available for private events. Located directly behind the Convention Center. <i>See our ad on page 64</i>
<b>HOTEL DEL CORONADO</b> 1500 Orange Ave., Coronado, CA 92118 619-522-8070, Fax: 619-522-8044 cong@hoteldel.com, www.hoteldel.com	920		1,288	5.6	Rising from water's edge on the quaint island of Coronado in San Diego, the Hotel del Coronado is considered one of America's most beautiful beach resorts. <i>Other Spaces: Outdoor Winsor Lawn, 1,470 seated.</i> <i>See our ad on page 135</i>
<b>HUMPHREYS CONCERTS BY THE BAY</b> 2303 Shelter Island Dr., San Diego, CA 92106 800-377-1177, Fax: 619-224-9179 catering@halfmooninn.com, www.halfmooninn.com	1,000		1,350	6.5	Versatile options for parties, concerts, receptions, team building events, wine and food tasting soiree and more. <i>See our ad on page 137</i>
<b>MARITIME MUSEUM OF SAN DIEGO</b> 1492 N. Harbor Dr., San Diego, CA 92101 619-234-9153 x102, www.sdmaritime.com	1,600	500	200	2	The museum has one of the world's finest collections of historic ships, including the world famous Star of India. <i>Other Spaces: Berkeley, 1,600/500. Star, 600/150. Surprise, 200/85. Californian, 100/20.</i>
<b>NTC PROMENADE</b> 2801 Rosecrans St., San Diego, CA 92106 619-573-9308, www.ntcpromenade.org		300	600	4.7	Located at the former Naval Training Center, featuring over 26 historic buildings, plazas and gardens. <i>Other Spaces: Indoor, 500. Outdoor, 5,000.</i>
<b>SAN DIEGO SYMPHONY SUMMER POPS ON SOUTH EMBARCADERO PARK</b> 200 Marina Parkway, San Diego, CA 92101 619-232-4327, www.sandiegosymphony.com	4,000	2,800	3,500	0.1	Situated on San Diego Bay and surrounded by water on three sides. Available for event rental May-September. State-of-the-art amenities include AV, staging, lighting, restrooms, table and chairs, security, beverage service, on-site catering and kitchens. <i>Other Spaces: Waterfront VIP Area, 500.</i>
<b>SEAPORT VILLAGE SPECIAL EVENTS</b> 849 West Harbor Dr., San Diego, CA 92101 619-531-0151 www.restaurantevents.com/seaport_village.html	4,000			0.4	Featuring 90,000 sq. ft. of waterfront shopping, dining and entertainment in a beautiful complex that recreates a harbor side setting of a century ago. <i>Other Spaces: Seaport Village + Parking Lots, 4,500 – 5,000. Seaport Village + North Embarcadero Park + Parking Lots, 10,000. See our ad on page 150</i>
<b>STAR OF THE SEA EVENT CENTER</b> 1360 H. Harbor Dr., San Diego, CA 92101 619-232-7408, Fax: 619-298-1212 bmasari@afgcorp.com, www.starofthesea.com	168	120		2	An exciting private venue located on the bay next to the Maritime Museum. <i>See our ad on page 150</i>
<b>USS MIDWAY MUSEUM</b> 910 N. Harbor Dr., San Diego, CA 92101 619-398-8257, Fax: 619-544-0173 ppfohl@midway.org, www.midway.org	3,500			0.9	No carrier has the history or the crew to match the Midway. A 47-year odyssey that spanned the end of WWII and Desert Storm, an odyssey in which more than 225,000 Americans took part. <i>Other Spaces: Hangar Deck, 2,000/800. Fantail, 75/50.</i> <i>See our ad on page 120</i>
<b>THE WAVEHOUSE AND BELMONT PARK</b> 3125 Mission Blvd., San Diego, CA 92109 858-228-9323, www.wavehouse.com	2,000	200		9	Beach party, surf, sand and sunsets. Dine, play or romance at California's greatest beachside amusement park. <i>Other Spaces: Two on-site restaurants and three bars. Wavehouse only 400/200.</i>